

QUARTZ

DL102 - RECESSED ADJUSTABLE DOWNLIGHT

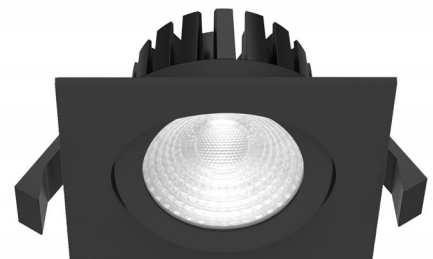


The Vision Quartz Recessed Downlight is slim and compact in design, making it suitable for narrow ceiling spaces.

Fitted with an efficient heat sink, the multiple T-shaped fins help to increase the surface area and quickly dissipate heat away from the luminaire.

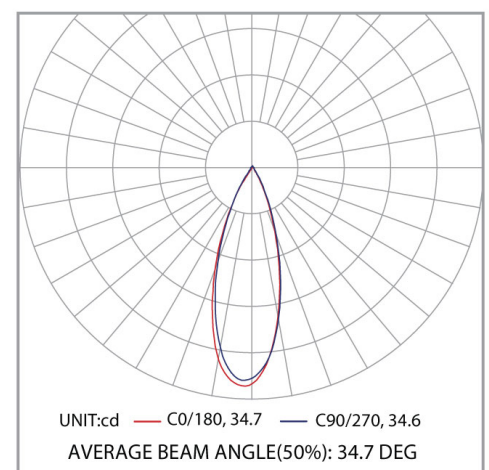
Cleverly designed, the Quartz is available in round or square designs and can be tilted up to 30 degrees either way and from the trim to aim the light where it is required.

With an IP65 rating, the Quartz is suitable for use in damp environments and comes complete with an Australian plug and spring clips for easy installation.



PRODUCT SPECIFICATIONS

| | |
|--------------------|---------------------|
| Wattage: | 5W / 8W / 10W / 13W |
| Lumens: | 480 - 1200Lm |
| Efficacy: | <87 Lm/W |
| CCT: | 3000K / 4000K |
| CRI: | >80 |
| Beam Angle: | 36 / 60 degrees |
| Dimming: | None / Triac / DALI |
| Colour: | White / Black |
| IP Rating: | IP65 |
| Mounting: | Plaster Recessed |
| Lifetime: | L70 >40,000 hours |



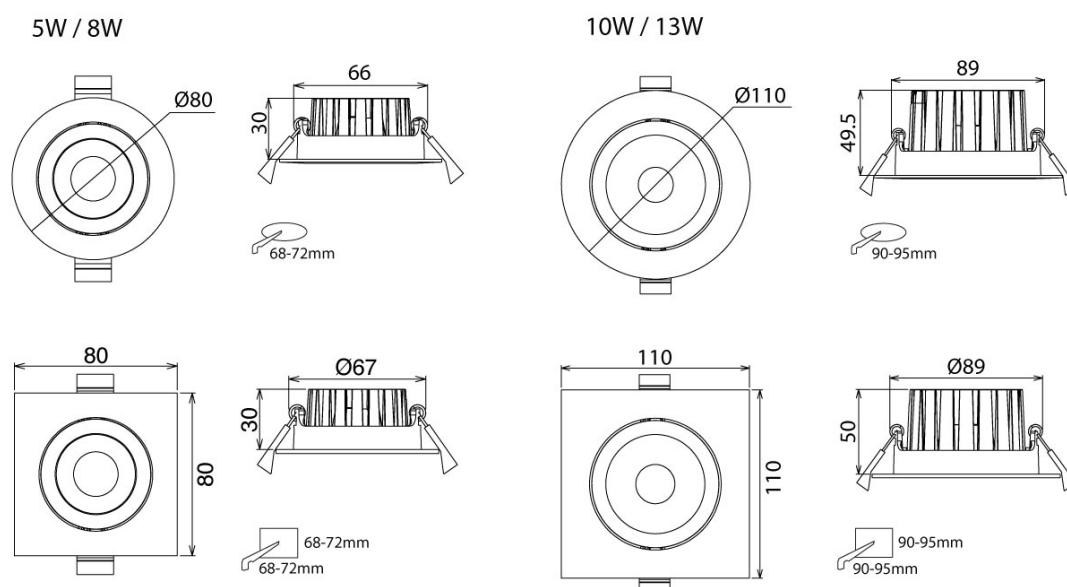
QUARTZ

DL102 - RECESSED ADJUSTABLE DOWNLIGHT

CODE BUILDER

| Family | Shape | Power | Lumens | CCT | Beam Angle | Trim Colour | Dimming |
|--------|---------------|---------|--------|-----------|----------------|-------------|---------------------|
| DL102 | (Blank) Round | -05 5W | 480Lm | -3K 3000K | -36D 36 Degree | -WT White | (Blank) Non-Dimming |
| | SQ Square | -08 8W | 735Lm | -4K 4000K | -60D 60 Degree | -BK Black | -D Triac Universal |
| | | -10 10W | 870Lm | | | | -DA DALI |
| | | -13 13W | 1200Lm | | | | |

DIMENSIONAL DIAGRAM



QUARTZ

DL102 - RECESSED ADJUSTABLE DOWNLIGHT

