

ALINYA SPLASH R52

SPL-R52 - PLASTER RECESSED LED EXTRUSION

Weatherproof & Elegant

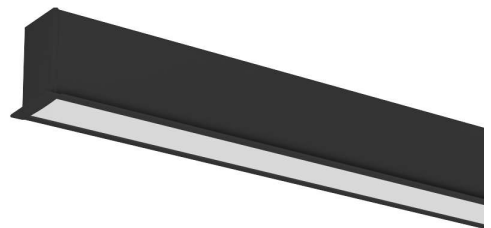


The Alinya Splash range from Vision Lighting takes linear lighting to another level with stylish weatherproof illumination. Incorporating a unique reflector and diffuser system, the Splash provides an even light distribution and efficacy of 148Lm/W.

Constructed to IP65, the Splash incorporates quality Lumileds and Osram LED componentry to achieve a calculated lifetime of L70 >150,000 hours.

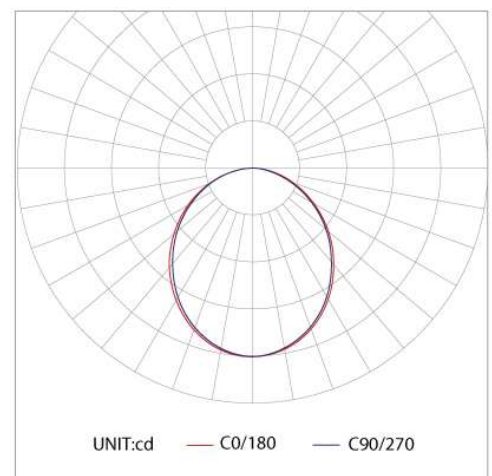
Manufactured in-house by Vision Lighting, the Alinya Splash range is available in custom lengths of up to 3.1m, with an expedient turnaround.

Available complete with spring clips for easy installation, the Splash R is ideal for use in damp or dusty environments such as pools, bathrooms and exterior lighting applications. Weight approx. 4.1Kg per metre.



PRODUCT SPECIFICATIONS

Wattage:	10W/m - 32W/m
Lumens:	700 - 2350lm/m
CCT:	3000K / 4000K
Dimming:	DALI available
Material:	Extruded Aluminium
Diffuser:	Opal Polycarbonate
Reflector:	Ultra-white Polycarbonate
Colour:	White / Black / Grey / Anodised
IP Rating:	IP65
Mounting:	Recessed
Lifetime:	L70 >150,000 hrs



ALINYA SPLASH R52

SPL-R52 - PLASTER RECESSED LED EXTRUSION

CODING MATRIX

Family	Power	Lm (3K9)	Lm (4K9)	CCT/CRI	Colour	Dimming
SPL-R52 Recessed	-10W	802	715	3K9 3000K CRI90	WT White	(Blank) Non-Dimmable
	-15W	1227	1094	4K9 4000K CRI90	BK Black	-DA DALI
	-20W	1554	1385			
	-25W	1870	1666			
	-32W	2347	2095			
		(Lumens per metre)				

DIMENSIONAL DIAGRAM

