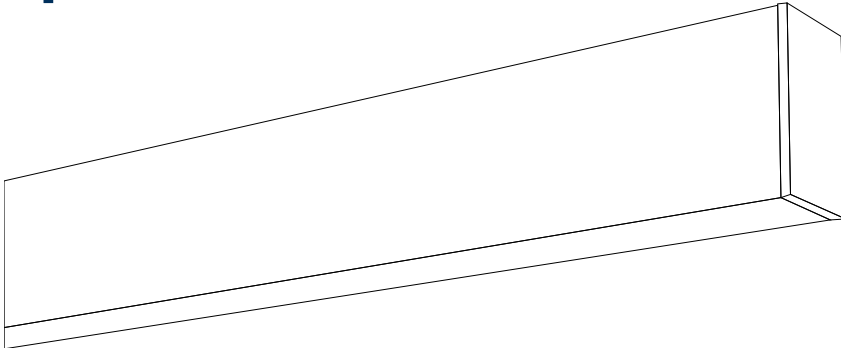


Installation Manual

Splash - SPL-F



CAUTION:

- For any questions or issues that are not included in this manual, please contact the manufacturer for information about possible solutions.
- Adherence to work, health and safety requirements should always be observed when undertaking the works contained in this installation manual.

THE MANUFACTURER IS NOT RESPONSIBLE FOR DAMAGE CAUSED BY FAILURE TO ADHERE TO INSTRUCTIONS PROVIDED IN THIS MANUAL.

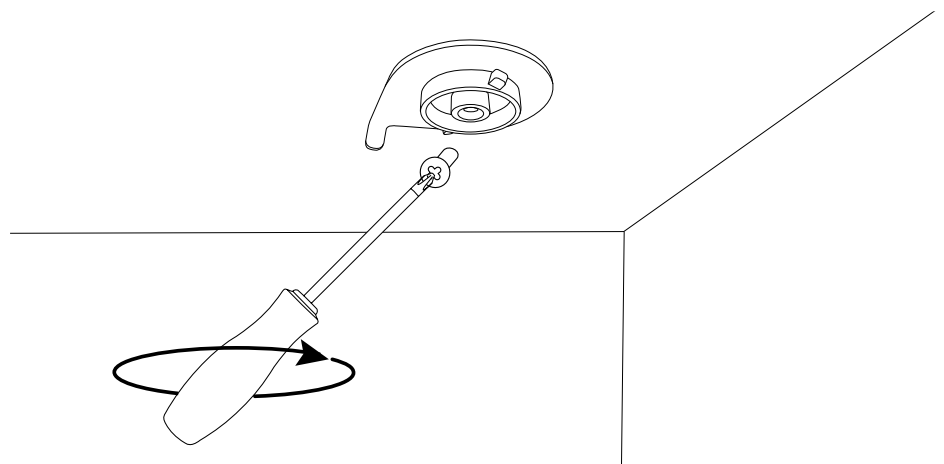
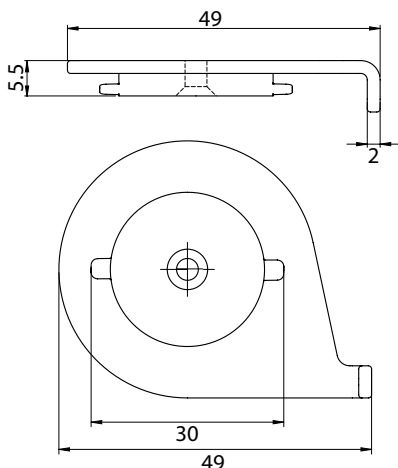
Product Overview

- LED Extrusion Luminaire
- Custom made to project lengths up to 3m
- Suitable for indoor and outdoor use
- Factory sealed gaskets for IP64 protection
- For ceiling surface mount applications
- Rated current ~ 0.3A per module

1 | Install Mounting Latch

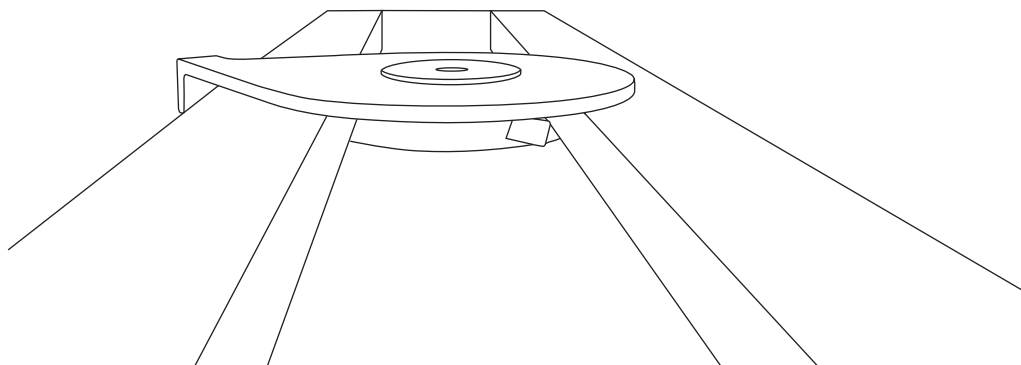
To mount the Splash F extrusion, screw the mounting latches firmly into the ceiling, ensuring the latch is still able to be swiveled by hand. Please refer to the below table for spacing and latch requirements.

Length	150mm from end	Centre	150mm from end
Up to 2500mm	1 x latch	N/A	1 x latch
2500mm to 3000mm	1 x latch	1 x latch	1 x latch



2| Mount Extrusion

Ensuring the latch tab is on the side of the extrusion, lift the extrusion onto the mounting latch so it slots into the mounting groove at the top of the extrusion.



3| Lock Mounting Lug

Once the extrusion is in place, rotate the latch tab to fit firmly against the side of the extrusion and lock the extrusion in place.

