

ENDEAVOUR

HLP05 - HANDRAIL POD



Small and Sleek, the Endeavour Handrail Pod luminaire from Vision Lighting is the perfect addition to your lighting project.

Constructed from die-cast aluminium, the Endeavour incorporates quality LED componentry ensuring high lumen output and colour consistency.

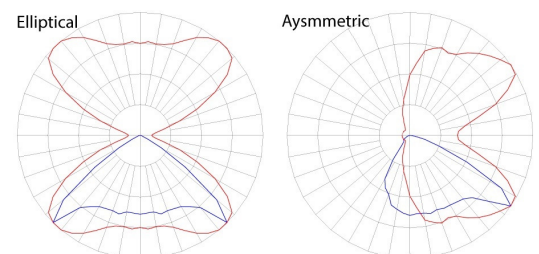
Available with a Symmetric or Asymmetric light distribution, and colour temperature options, the Endeavour is made to suit a range of handrail lighting applications.

Engineered and assembled in Australia.



PRODUCT SPECIFICATIONS

Wattage:	0.96W @350mA
Lumens:	115Lm @350mA (3000K Asymmetric)
CCT:	3000K / 4000K
CRI:	Ra>70
Distribution:	80 x 120° Elliptical Asymmetric
Dimming:	Using Dimmable Driver
Heatsink:	Die-Cast Aluminium
Colour:	Black Chrome Bronze
IP Rating:	IP65
Mounting:	28.5 - 52mm Handrail Internal Diameter
Cutout:	20mm Diameter Cutout
Lifetime:	L90B10>120,000 hours
Input Voltage:	~2.7 - 2.9V



ENDEAVOUR

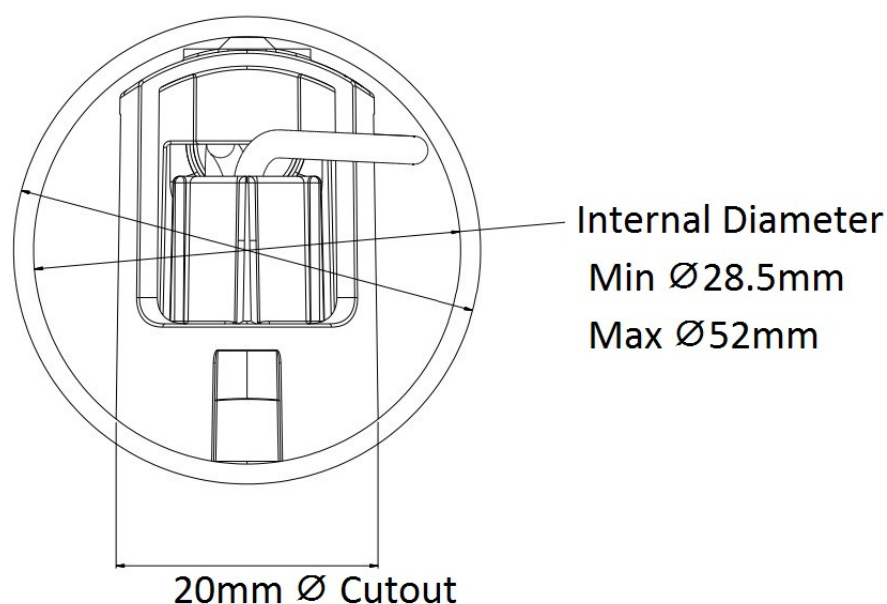
HLP05 - HANDRAIL POD

CODING MATRIX

Family	CCT		Trim Colour		Distribution	
HLP05	-3K	3000K	-BK	Black	-SYM	Symmetrical
	-4K	4000K	-CHR	Chrome	-ASYM	Asymmetrical
			-BRS	Brass		

Power, lumens and dimming determined by driver settings

DIMENSIONAL DIAGRAM



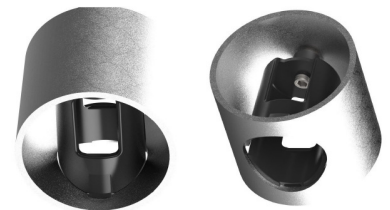
ENDEAVOUR

HLP05 - HANDRAIL POD

SNAP-IN INSTALLATION

The HLP05 is supplied complete with a handrail insert for easy installation. The handrail is not required to be tapped to thread the light into.

A grub screw and 2 pipe insert variants allows adjustment for a variety of handrail sizes, from 28.5mm up to 52mm (Internal Diameter).



LUMEN OUTPUT RANGE

The same luminaire is used for a range of lumen outputs by setting the driver at a different current.

For dimming control such as DALI or Casambi, this can be controlled by selecting an applicable driver.

Current	Symmetric		Asymmetric	
	3000K	4000K	3000K	4000K
150mA	55Lm	60Lm	54Lm	57Lm
250mA	89Lm	97Lm	83Lm	91Lm
350mA	123Lm	135Lm	115Lm	126Lm
500mA	159Lm	175Lm	148Lm	164Lm
700mA	203Lm	224Lm	191Lm	210Lm

TYPICAL SPACING - PATHWAYS (*)

* This spacing table is based on designs to AS/NZS 1158.3.1:2020 Category PP4, using typical conditions and parameters. Please contact Vision Lighting for lighting designs to ensure compliance on your project.

Designs completed using asymmetric distribution.

Path Width	Layout	Current	Spacing
1.2m	Single Sided	350mA	3.6m
2.1m	Single Sided	350mA	2.4m
3.0m	Single Sided	350mA	1.5m
3.6m	Single Sided	700mA	4.8m
4.2m	Double Sided	350mA	4.8m

ENDEAVOUR

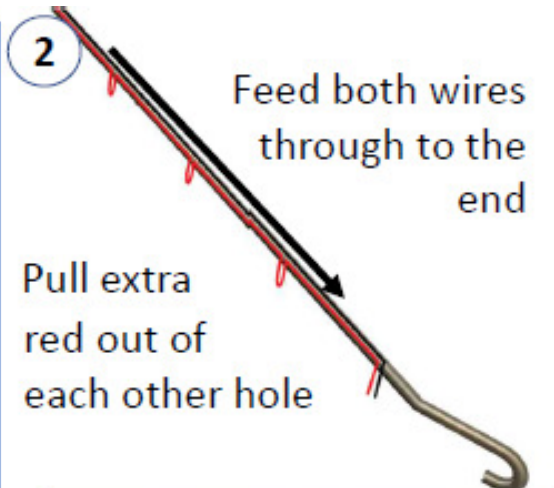
HLP05 - HANDRAIL POD

INSTALLATION GUIDE

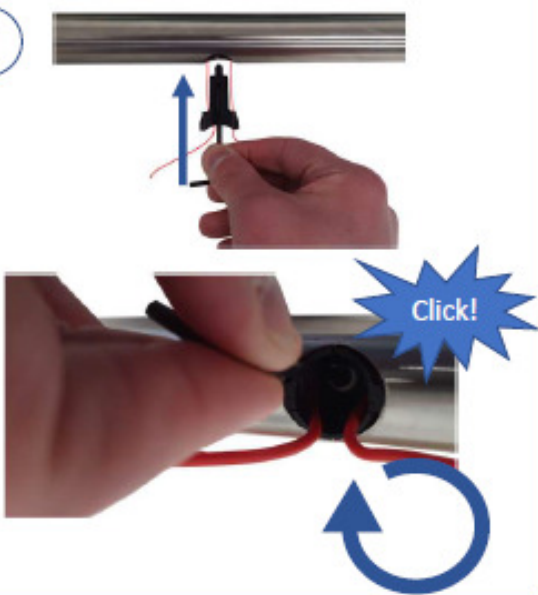
- 1** (Wherever possible, hand-rail contractor to pre-drill)



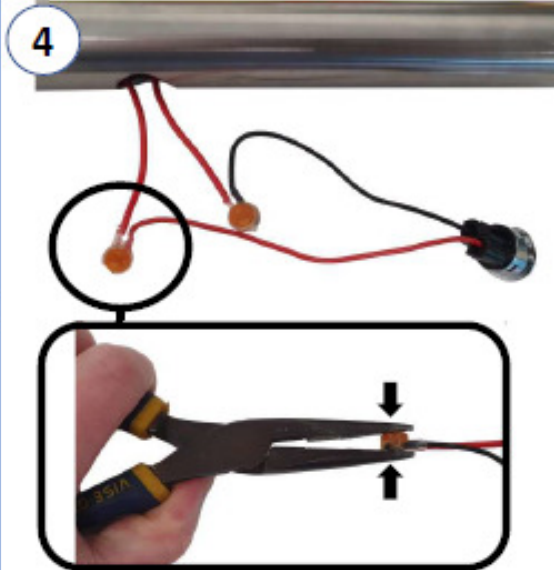
- 2** Feed both wires through to the end
Pull extra red out of each other hole



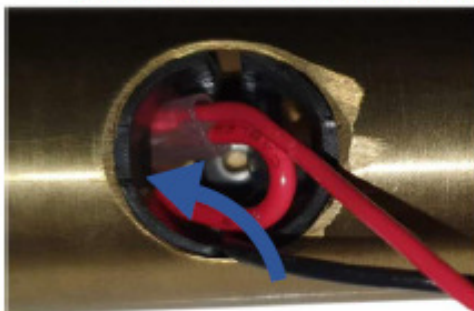
- 3**
- Click!



- 4**

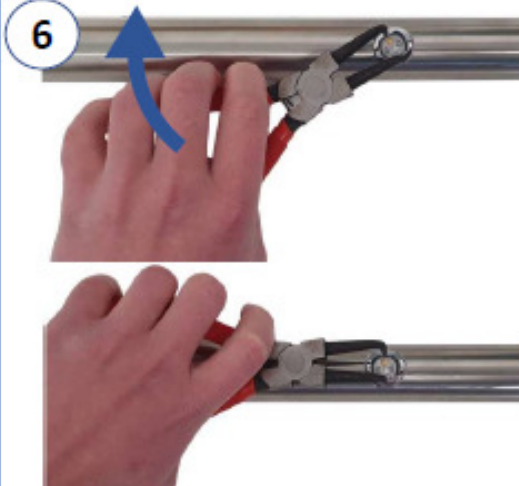


- 5** Feed Splice Connectors in head-first



Do not cross wires

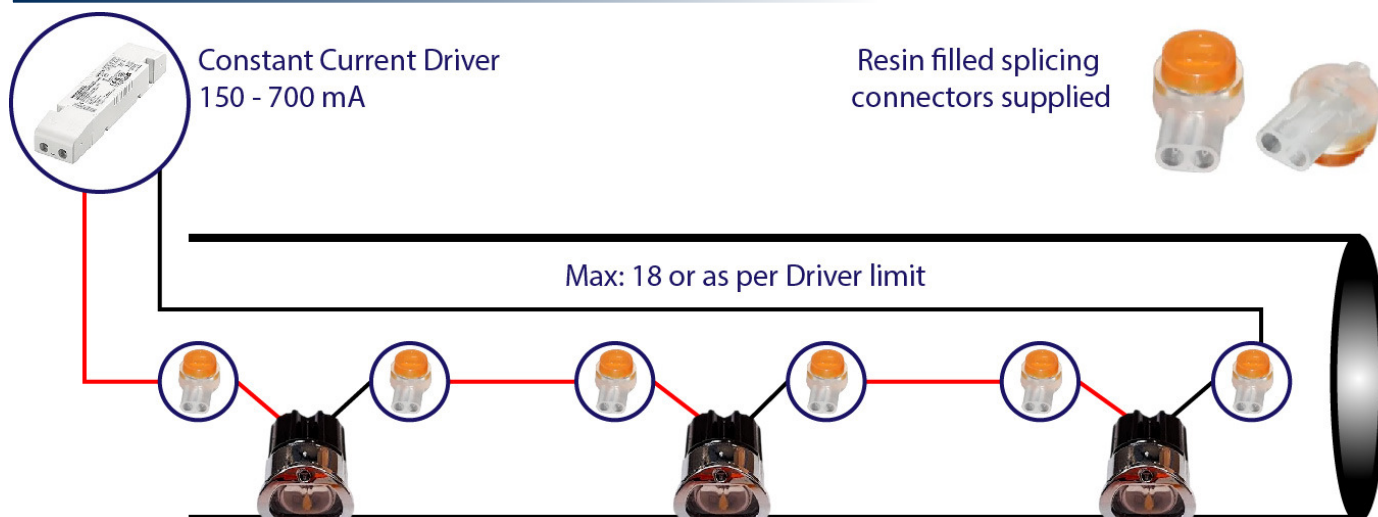
- 6**



ENDEAVOUR

HLP05 - HANDRAIL POD

WIRING DIAGRAM



MOUNTING ACCESSORY DETAILS

Refer to the following table for mounting accessories required for specific handrail dimensions. These accessories are supplied by Vision Lighting. Handrail diameter must be advised along with the order.

Handrail Internal Diameter		(Internal diameter = outside diameter - 2 x pipe thickness)		
Min	Max	Pipe Insert	Grub Screw	Allen Key Size
28.5mm	30mm	HLP05-PIPEINSERT-SMALL	M3 x 6mm cone point	1.5mm
30mm	32mm		M3 x 8mm cone point	
32mm	34mm		M3 x 10mm cone point	
34mm	36mm		M3 x 12mm cone point	
32mm	36mm	HLP05-PIPEINSERT	M5 x 8mm cone point	2.5mm
36mm	40mm		M5 x 12mm cone point	
40mm	44mm		M5 x 16mm cone point	
44mm	48mm		M5 x 20mm cone point	
48mm	52mm		M5 x 24mm cone point	

ENDEAVOUR

HLP05 - HANDRAILPOD

Handrail Pod Driver Calculator

